

I F I E X P O R T S

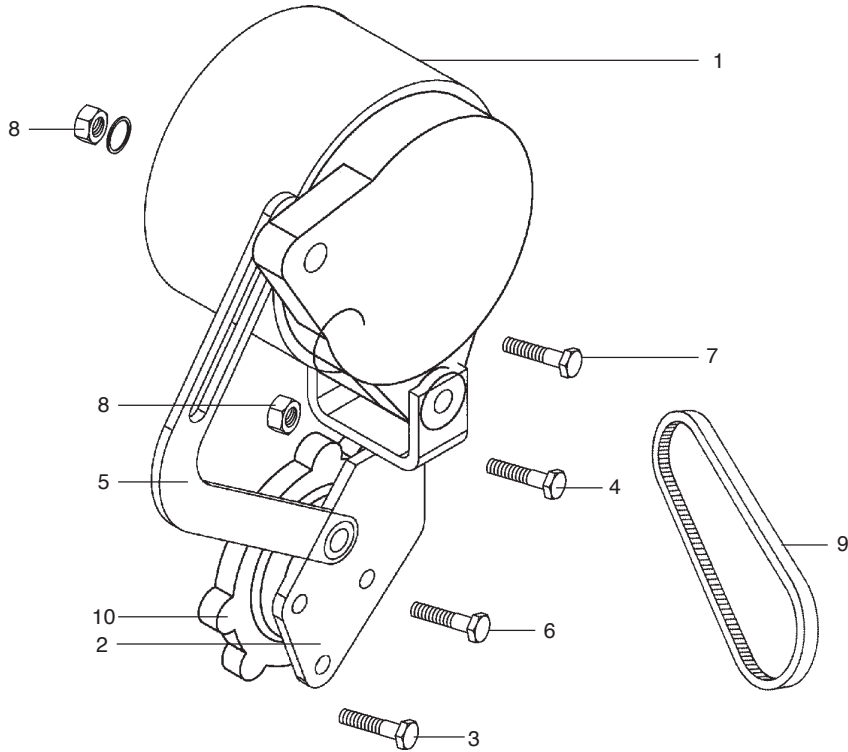
DESCRIPTION

PAGES

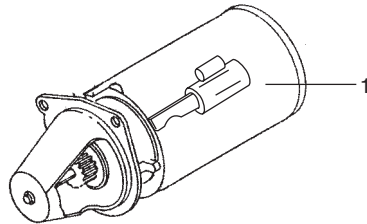
245DI BHOOMIPUTRA

Alternator Drive & Mountings	4-5
Starter Motor	4-5
Battery Cover, Instrument Panel, Scuttle Panel, Controlling Instruments, Gauges, Horn & Lamps	4-5
Clutch Housing & Connections	6-7
Transmission Gears & Shafts	6-7
Differential	8-9
Rear Axle Carrier And Rear Axle	8-9
Front Axle (One Piece), Stay Rod And Cast Iron Weight	10-11
Front Axle Support (Folded),Front End Weights & Bracket	10-11
Steering Knuckle, Arm, Drag Link And Tie Rod	12-13
Fuel System	14-15
Battery Box	14-15
Governor Control Linkages	14-15
Foot Accelerator	16-17
Hood And Radiator Grille	16-17
Hydraulics	18-19
Crankcase Assembly	20-23
Crankshaft Mechanism	24-25
Valve Gear	26-27
Cylinder Head Assembly	28-29
Cylinder Head Assembly	30-31
Cooling System	32-33
Water Pump Assembly	32-33
Lubricating System	34-35
Fuel System	36-37
Air Cleaner	36-37

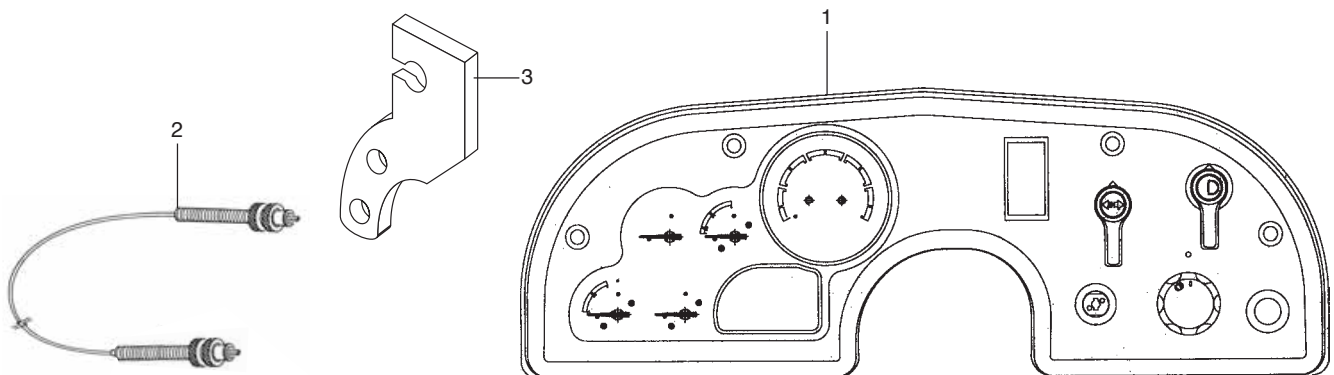
ALTERNATOR DRIVE & MOUNTINGS



STARTER MOTOR



BATTERY COVER, INSTRUMENT PANEL, SCUTTLE PANEL, CONTROLLING INSTRUMENTS, GAUGES, HORN & LAMPS



ALTERNATOR DRIVE & MOUNTINGS

<i>REF. NO.</i>	<i>DESCRIPTION OF PART</i>	<i>UNIT QTY.</i>	<i>NEW / REVISED PART NO.</i>
1	ALTERNATOR with pulley cpte.(36 Amps)	1	
2	BRACKET Alternator mounting	1	
3	BOLT Alternator Bracket Mounting	3	
4	BOLT Alternator (M10 x 1.5 x 85 mm long)	1	
5	STRUT Alternator	1	
6	BOLT (M10 x 1.5 x 15) Strut to Idler	1	
7	BOLT (M10 x 1.5 x 20) Strut to Alternator	1	
8	NUT M10 x 1.5 pitch	2	
9	VÍ BELT Alternator Pulley to Pump Pulley	1	
10	IDLER Cage	1	

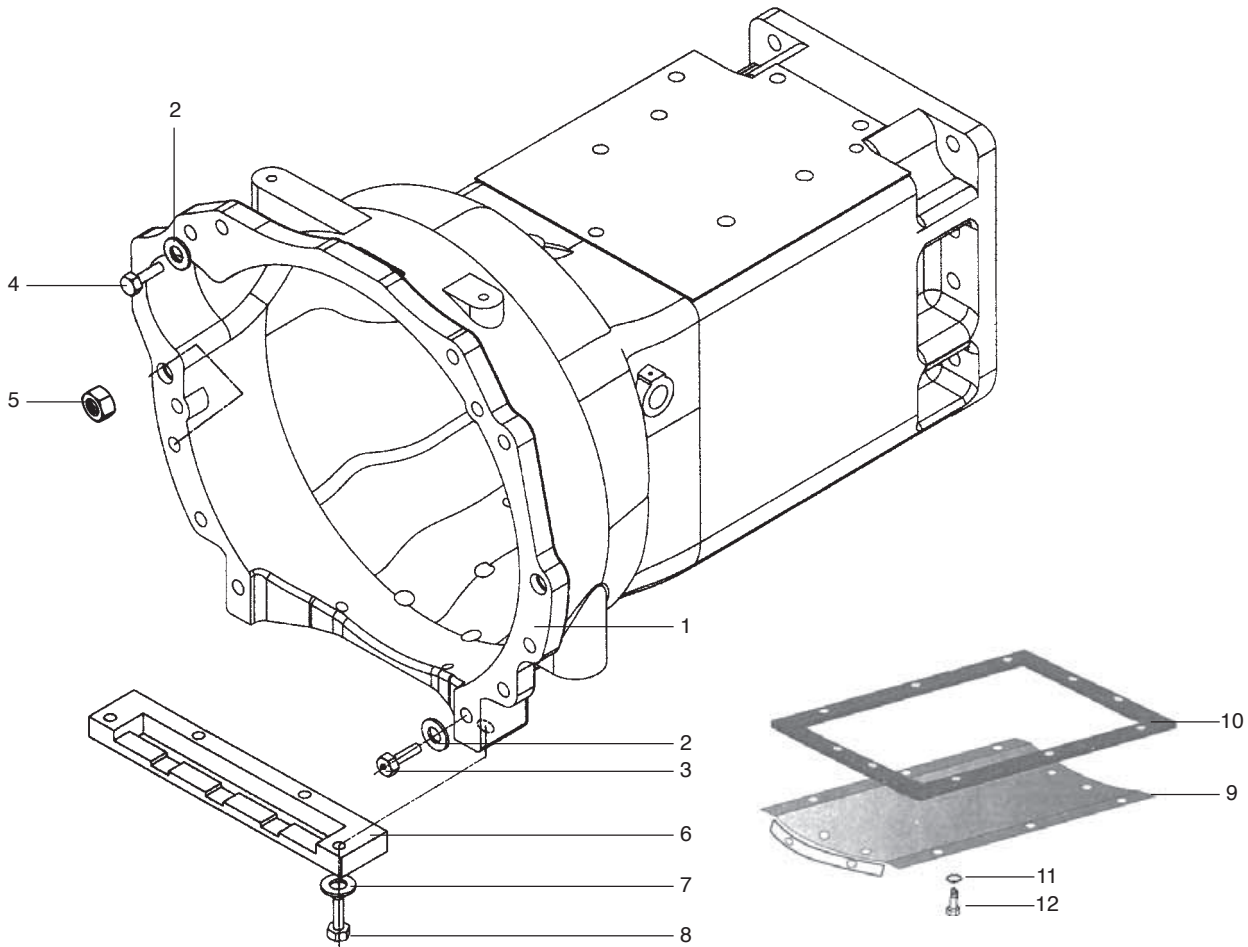
STARTER MOTOR

1	STARTER Motor - (2SM14)		
*	SPRING Washer M10 for Starter Motor		
*	BOLT M10 x 30L for Starter Motor		

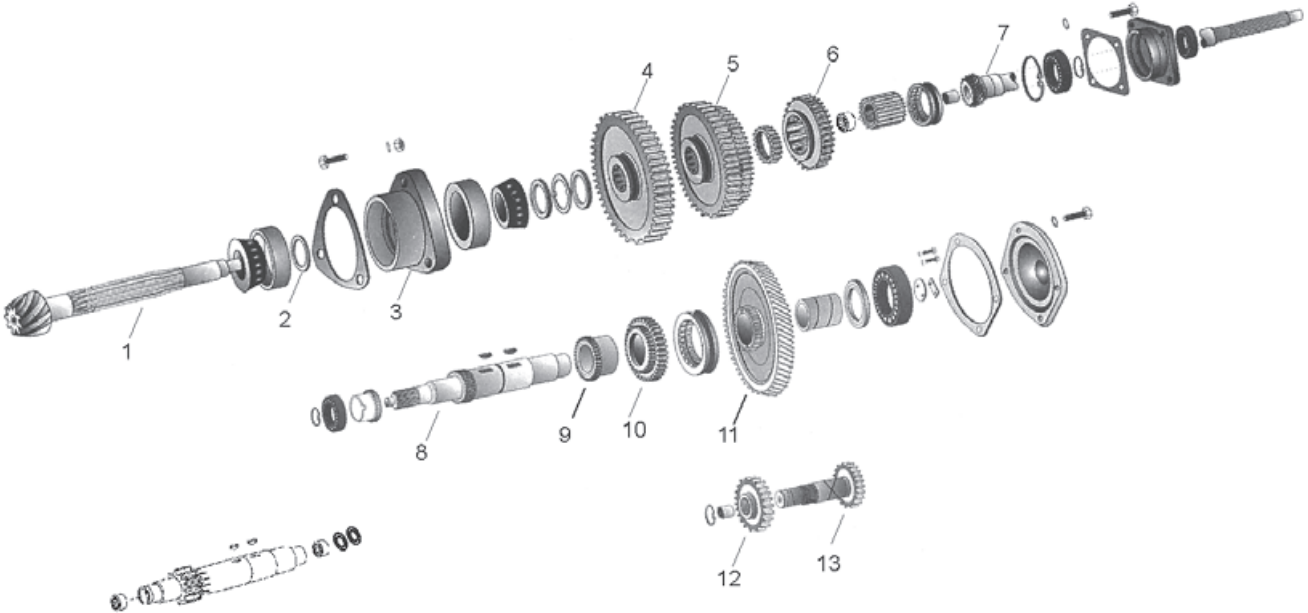
BATTERY COVER, INSTRUMENT PANEL, SCUTTLE PANEL, CONTROLLING INSTRUMENTS, GAUGES, HORN & LAMPS

*	CABLE Battery Positive	1	
1	INSTRUMENT Cluster	1	
*	BOLT 1/4" UNC x 1-1/2" Hx Hd	4	
*	WIRING Harness Front	1	
*	WIRING Harness Main	1	
*	WIRING Harness Platform	1	
2	CABLE Hour Meter Flexible	1	
*	CABLE Pull To Stop	1	
3	BRACKET Cable Mtg. Pull to Stop	1	

CLUTCH HOUSING & CONNECTIONS



TRANSMISSION GEARS & SHAFTS



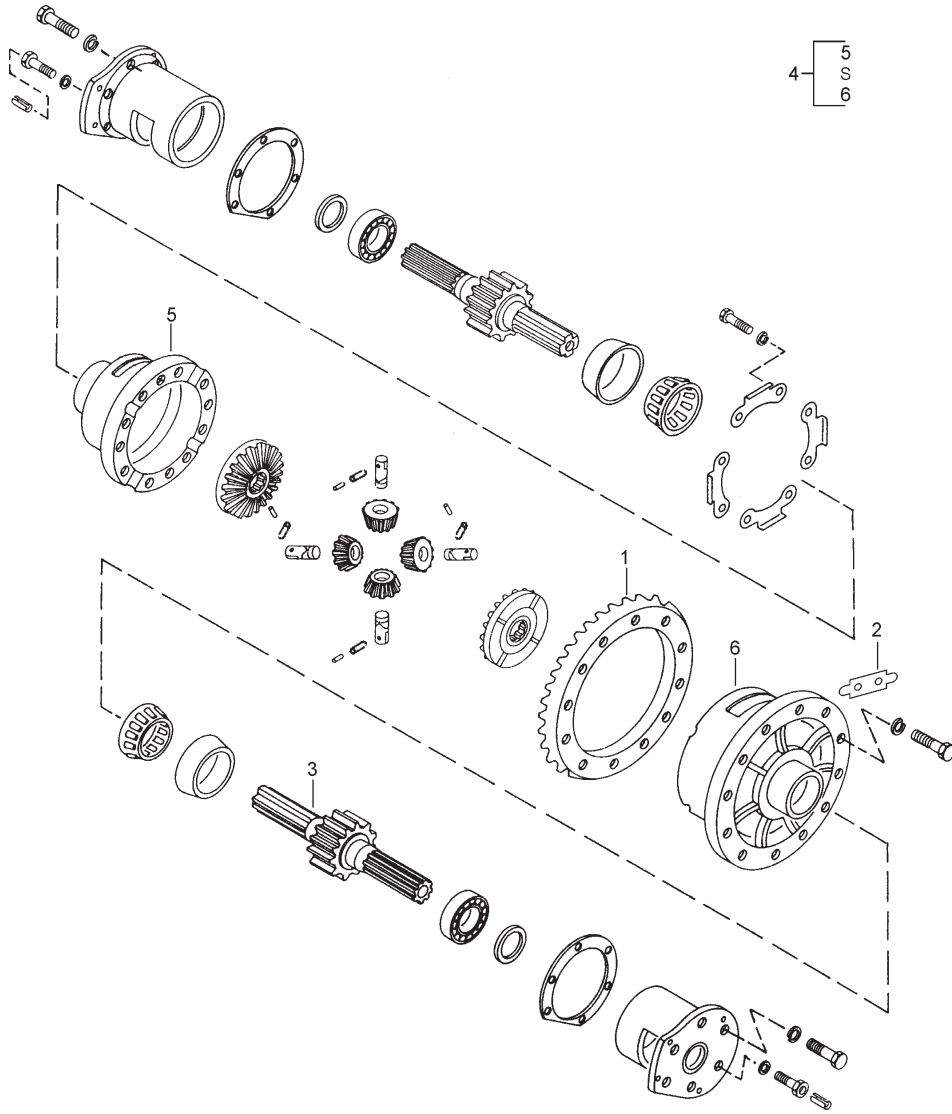
CLUTCH HOUSING & CONNECTIONS

REF. NO.	DESCRIPTION OF PART	UNIT QTY.	NEW / REVISED PART NO.
1	HOUSING Clutch Cpte. With 2 Grease Nipples	1	
2	WASHER Spring Lock 1/2"	11	
3	BOLT Clutch Hsg. 1/2" UNC x 2-1/4"	3	
4	BOLT Clutch Hsg. 1/2" UNC x 1-7/8"	7	
5	NUT Clutch Hsg. 1/2" UNC	1	
6	COVER Dust Cpte.	1	
7	WASHER Dust Cover (3/8" Spring Lock)	4	
8	BOLTS Dust Cover Mtg. (3/8" UNC x 1-1/4")	4	
9	COVER Hand Hole Clutch Hsg. Cpte.	1	
10	RUBBER Hand Hole Clutch Hsg.	1	
11	WASHER Hand Hole Cover (3/8" Spring Lock)	10	
12	BOLTS Cover Hand Hole Mtg.	10	

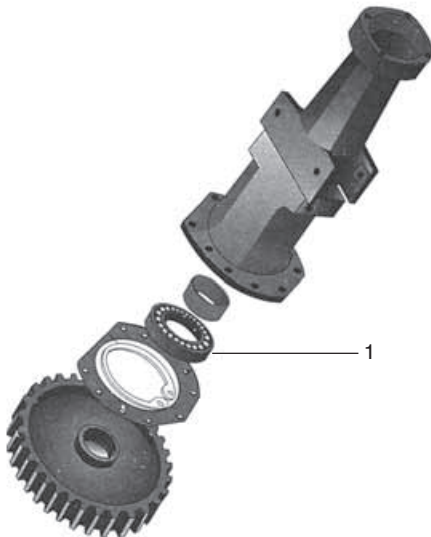
TRANSMISSION GEARS & SHAFTS

1	SHAFT Transmission Spline (11 Teeth)	1	
2	SPACER Transmission Spline Shaft T.R. Bearing	1	
3	CAGE Transmission Spline Shaft T.R. Bearing	1	
4	GEAR Sliding 1st & Reverse Speed (54 Teeth)	1	
5	GEAR Sliding 2nd & 3rd Speed (45 & 39 Teeth)	1	
*	SET of 4 comprising of		
6	↳ GEAR 4th & Direct Speed (35 Teeth)	1	
7	SHAFT Transmission Driving (16 Teeth)	1	
8	SHAFT Counter Trans & 1st Speed Gear (Non CRPTO)	1	
9	GEAR Driving 2nd Speed (24 Teeth)	1	
10	GEAR Driving 3rd & 4th Speed	1	
11	GEAR Constant Mesh (54 Teeth)	1	
12	GEAR Driving Reverse Idler (Teeth)	1	
13	SHAFT and Gear Reverse Idler (21 Teeth)	1	
*	KEY Woodruff 1/4 x 1 - 1/8	1	

DIFFERENTIAL



REAR AXLE CARRIER AND REAR AXLE



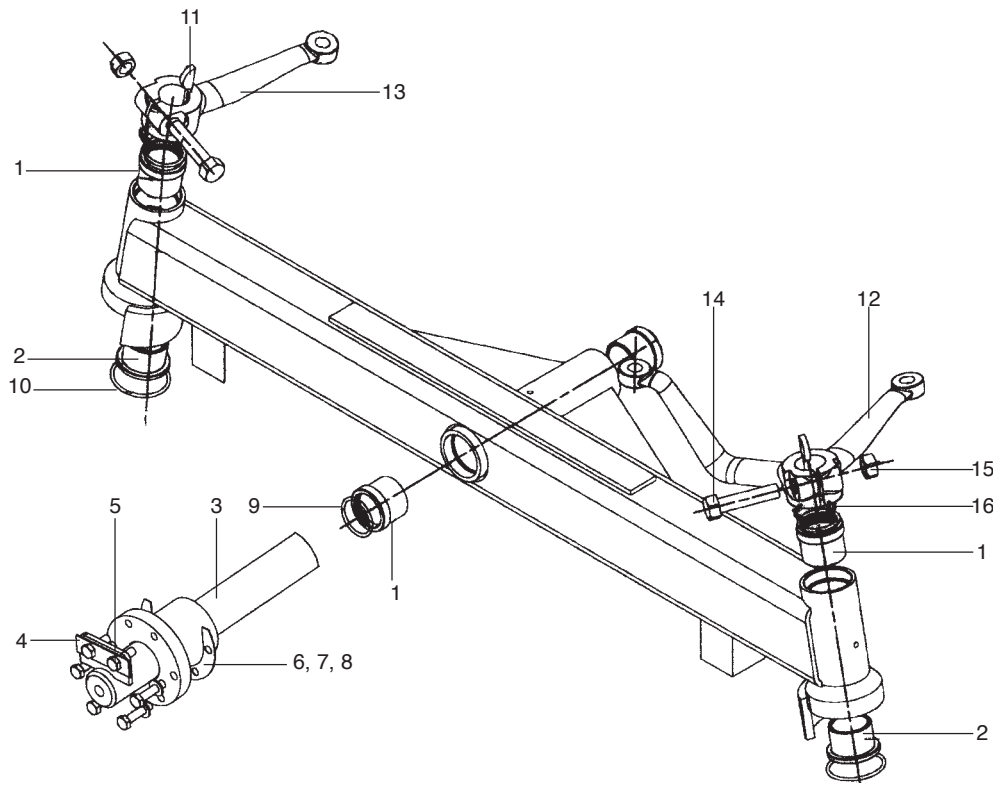
DIFFERENTIAL

<i>REF. NO.</i>	<i>DESCRIPTION OF PART</i>	<i>UNIT QTY.</i>	<i>NEW / REVISED PART NO.</i>
	SET of Two Comprising of	1	
*	└▶ SHAFT Transmission Spline (11 Teeth)	1	
1	└▶ GEAR Spiral Bevel Drive	1	
2	LOCK Plate Ring Gear	1	
3	SHAFT Bull Pinion & Brake R.H	2	
4	CASE Differential Cpte	1	
	Comprising of		
5	└▶ CASE Differential LH	1	
6	└▶ CASE Differential RH	1	

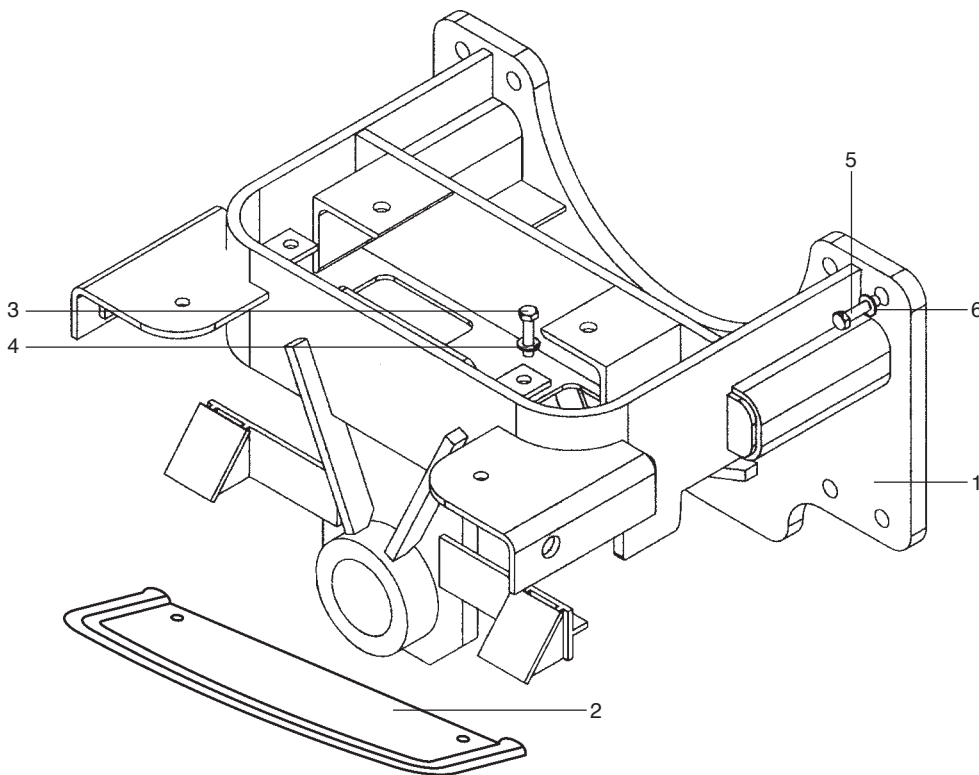
REAR AXLE CARRIER AND REAR AXLE

1	BEARING Rear Axle Inner	2	
---	--------------------------------	---	--

FRONT AXLE (ONE PIECE)



FRONT AXLE SUPPORT (FOLDED)



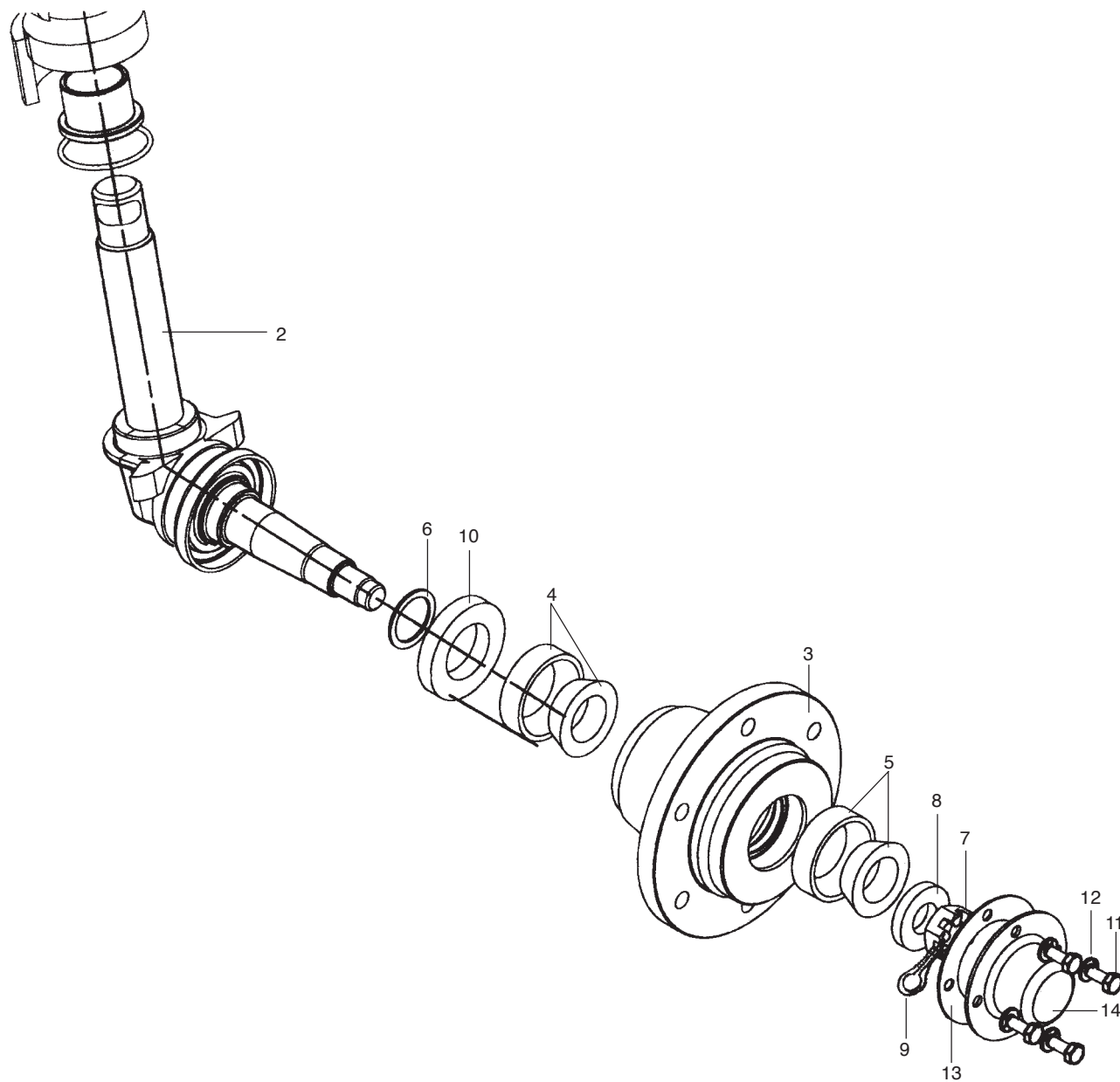
FRONT AXLE (ONE PIECE)

REF. NO.	DESCRIPTION OF PART	UNIT QTY.	NEW / REVISED PART NO.
	FRONT Axle Cpte. Comprising of		
1	→ BUSH Central Sleeve Front Axle	4	
2	→ BUSH Steering Knuckle (Thrust)	2	
3	→ PIN Pivot Front Axle With Lock Plate	1	
4	→ LOCK Plate Small - Front Axle Pivot Pin	2	
5	→ BOLT (8mm x 1.25mm x 20mm)	2	
6	→ SHIM Stg. Knuckle Pivot Pin (0.1 thickness)	2	
7	→ SHIM Stg. Knuckle Pivot Pin (0.2 thickness)	2	
8	→ SHIM Stg. Knuckle Pivot Pin (0.5 thickness)	4	
9	→ Oí RING Front Axle Pivot Pin	2	
10	→ Oí RING Bottom Steering Knuckle	2	
11	→ KEY Woodruff 1/4 x 1.1/4	1	
12	→ ARM Knuckle LH	1	
13	→ ARM Knuckle RH	1	
14	→ BOLT 5/8 UNC x 2-3/4 Hx. Hd.	2	
15	→ NUT	1	
16	→ SHIM Front Axle Pivot Pin (0.2 thickness)	4	
16	→ SHIM Front Axle Pivot Pin (0.2 thickness)	4	
16	→ SHIM Front Axle Pivot Pin (0.2 thickness)	4	

FRONT AXLE SUPPORT (FOLDED)

1	SUPPORT Front Axle (Folded)	1	
2	BOTTOM Sealing	1	
3	BOLT M10 x 20	4	
4	WASHER Spring Lock M10	4	
5	BOLT Hx Hd M14 x 50 (FAS to Front Cover)	8	
6	WASHER Spring Lock M14 (FAS to Front Cover)	8	

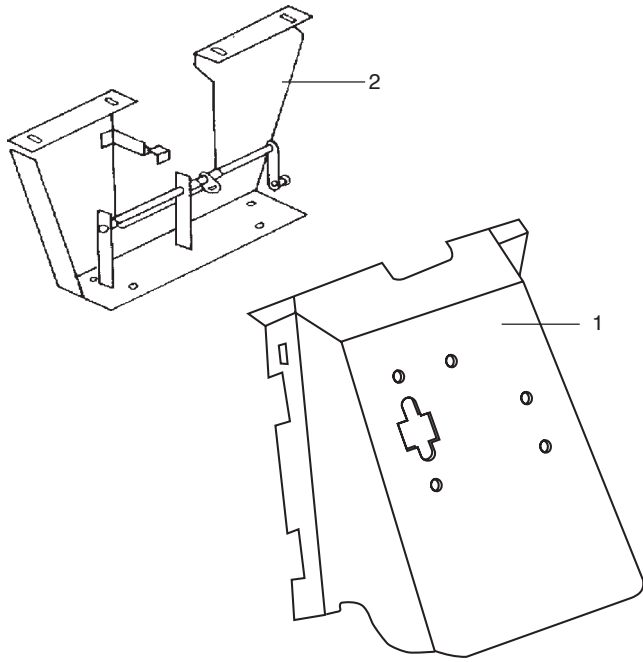
STEERING KNUCKLE, ARM, DRAG LINK AND TIE ROD



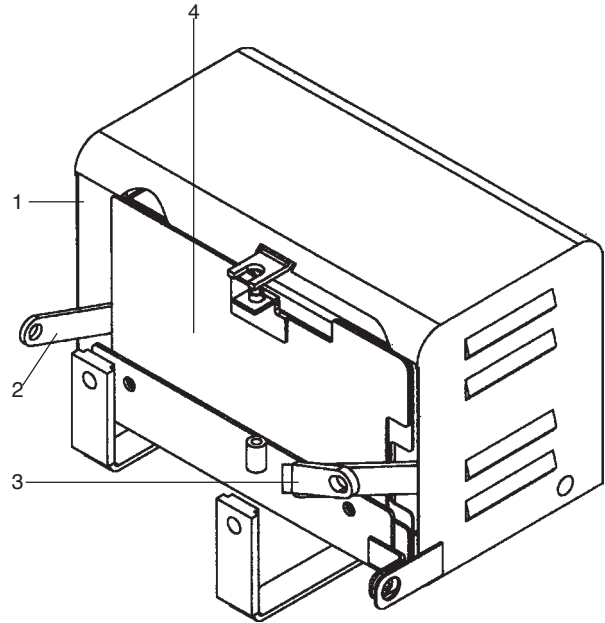
STEERING KNUCKLE, ARM, DRAG LINK AND TIE ROD

REF. NO.	DESCRIPTION OF PART	UNIT QTY.	NEW / REVISED PART NO.
1	STEERING Knuckle With Hub Assly. RH Consists of	1	
2	▶ STEERING Knuckle Cpte RH	1	
3	▶ FRONT Wheel Hub	1	
4	▶ INNER Bearing	1	
5	▶ OUTER Bearing	1	
6	▶ FELT Washer	1	
7	▶ SLOTTED Nut 7/8"	1	
8	▶ HUB Washer (Outer Bearing)	1	
9	▶ COTTER Pin	1	
10	▶ OIL Seal	1	
11	▶ BOLT 5/6" UNC x 3/4 HEX. Head	4	
12	▶ WASHER 5/16" Spring Lock	4	
13	▶ GASKET Front Wheel Hub Cap	1	
14	▶ CAP Front Wheel Hub	1	
1	STEERING Knuckle With Hub Assly. LH Consists of	1	
2	▶ STEERING Knuckle Cpte LH	1	
3	▶ FRONT Wheel Hub	1	
4	▶ INNER Bearing	1	
5	▶ OUTER Bearing	1	
6	▶ FELT Washer	1	
7	▶ SLOTTED Nut 7/8"	1	
8	▶ HUB Washer (Outer Bearing)	1	
9	▶ COTTER Pin	1	
10	▶ OIL Seal	1	
11	▶ BOLT 5/6" UNC x 3/4 HEX. Head	4	
12	▶ WASHER 5/16" Spring Lock	4	
13	▶ GASKET Front Wheel Hub Cap	1	
14	▶ CAP Front Wheel Hub	1	
*	TIE Rod Assly..	1	
*	WASHER Plain M10	2	
*	PIN Cotter	6	
*	DRAG Link Cpte.	1	

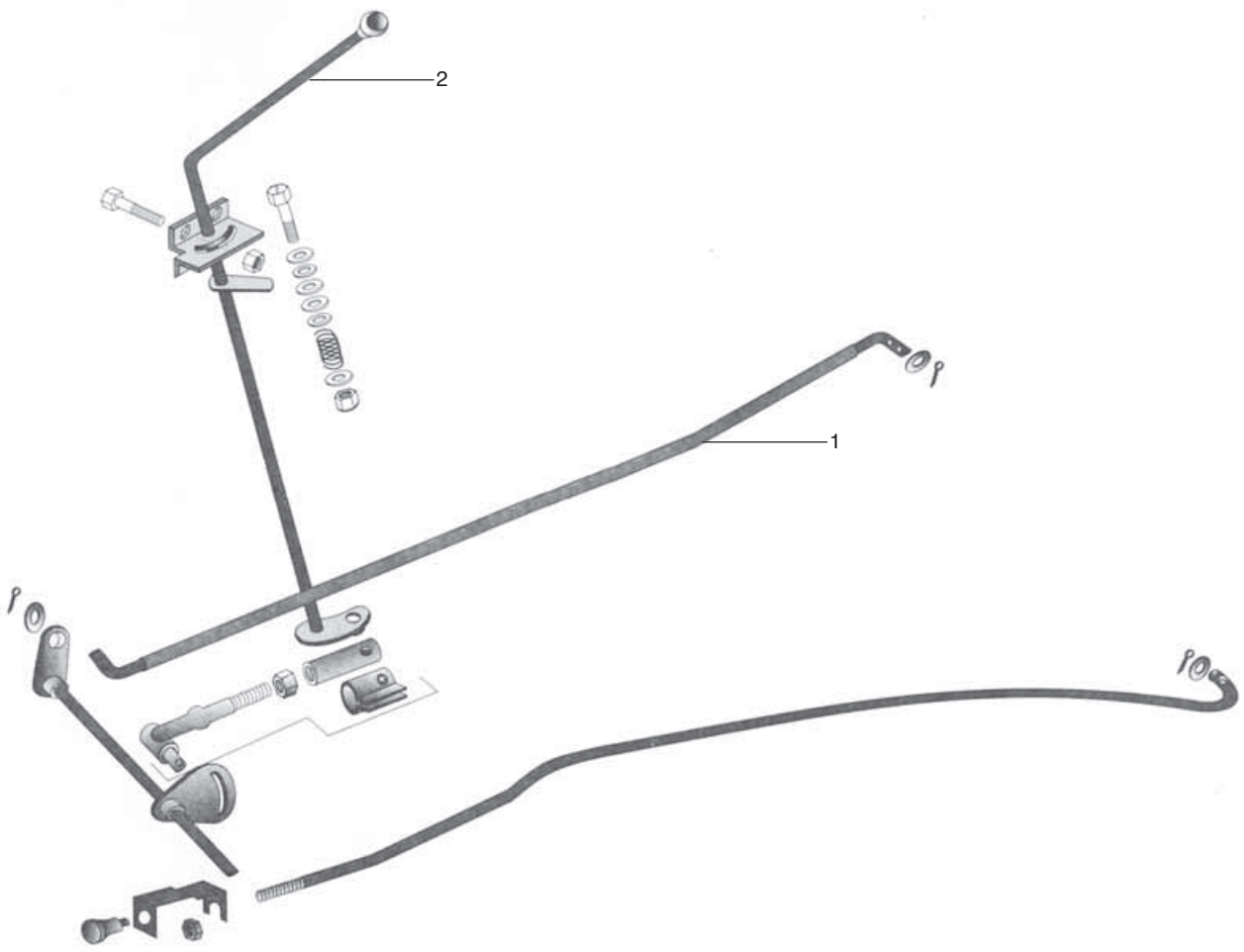
FUEL SYSTEM



BATTERY BOX



GOVERNOR CONTROL LINKAGES



FUEL SYSTEM

<i>REF. NO.</i>	<i>DESCRIPTION OF PART</i>	<i>UNIT QTY.</i>	<i>NEW / REVISED PART NO.</i>
1	PANEL Scuttle	1	
*	GROMMET Rubber Scuttle Panel	1	
2	SUPPORT Scuttle Rear Cpte	1	

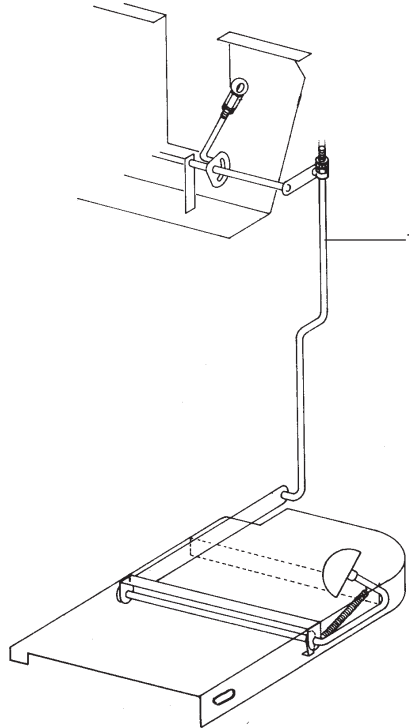
BATTERY BOX

1	TRAY Battery Cpte.	1	
2	BRACE Battery Front	1	
3	BRACE Battery Rear	1	
4	FLAP Mud	1	

GOVERNOR CONTROL LINKAGES

1	ROD Control Cross Shaft to Governor	1	
2	LEVER Governor Cpte.	1	

FOOT ACCELERATOR



HOOD AND RADIATOR GRILLE



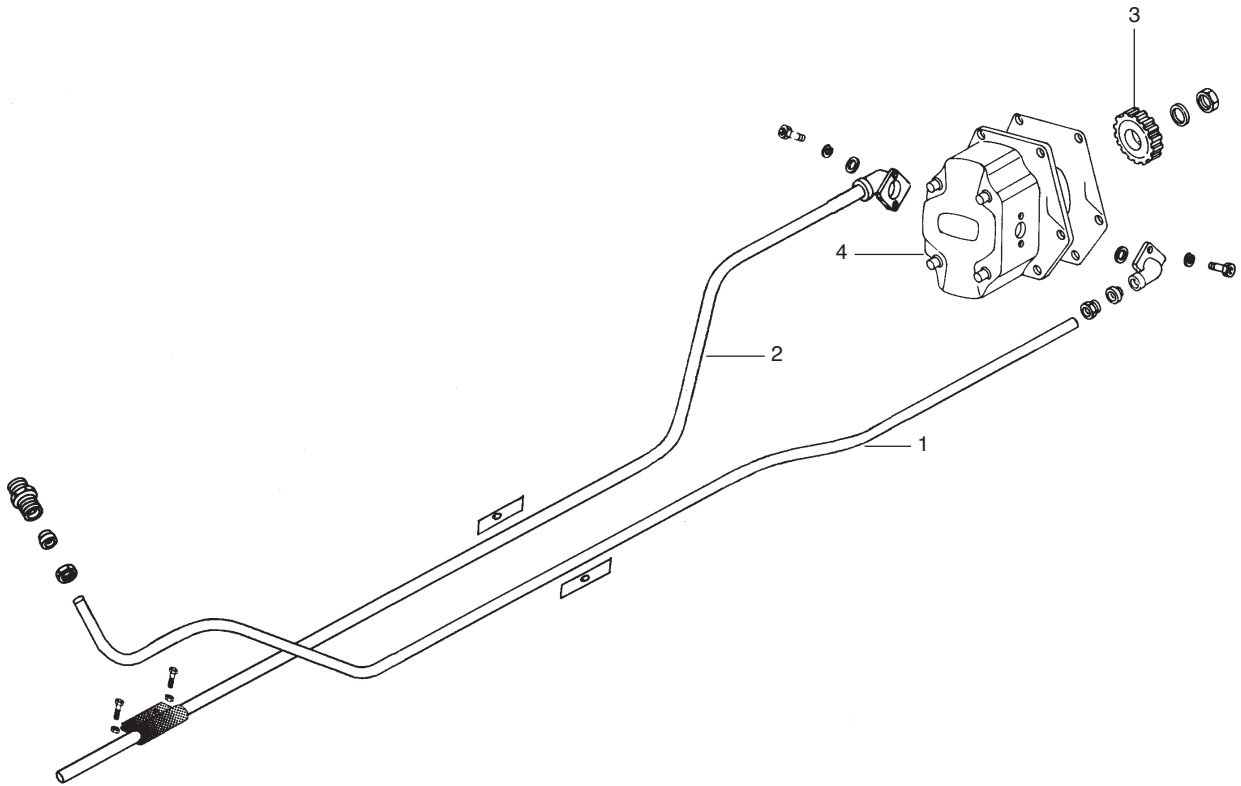
FOOT ACCELERATOR

<i>REF. NO.</i>	<i>DESCRIPTION OF PART</i>	<i>UNIT QTY.</i>	<i>NEW / REVISED PART NO.</i>
1	ROD Control Cpte. (Foot Pedal Cross Shaft)	1	

HOOD AND RADIATOR GRILLE

1	HOOD & Radiator Grille Assembly	1	
2	GRILL Screen Mesh	1	
3	GRAPHIC Product	2	
4	STRIPE LH	1	
4	STRIPE RH	1	

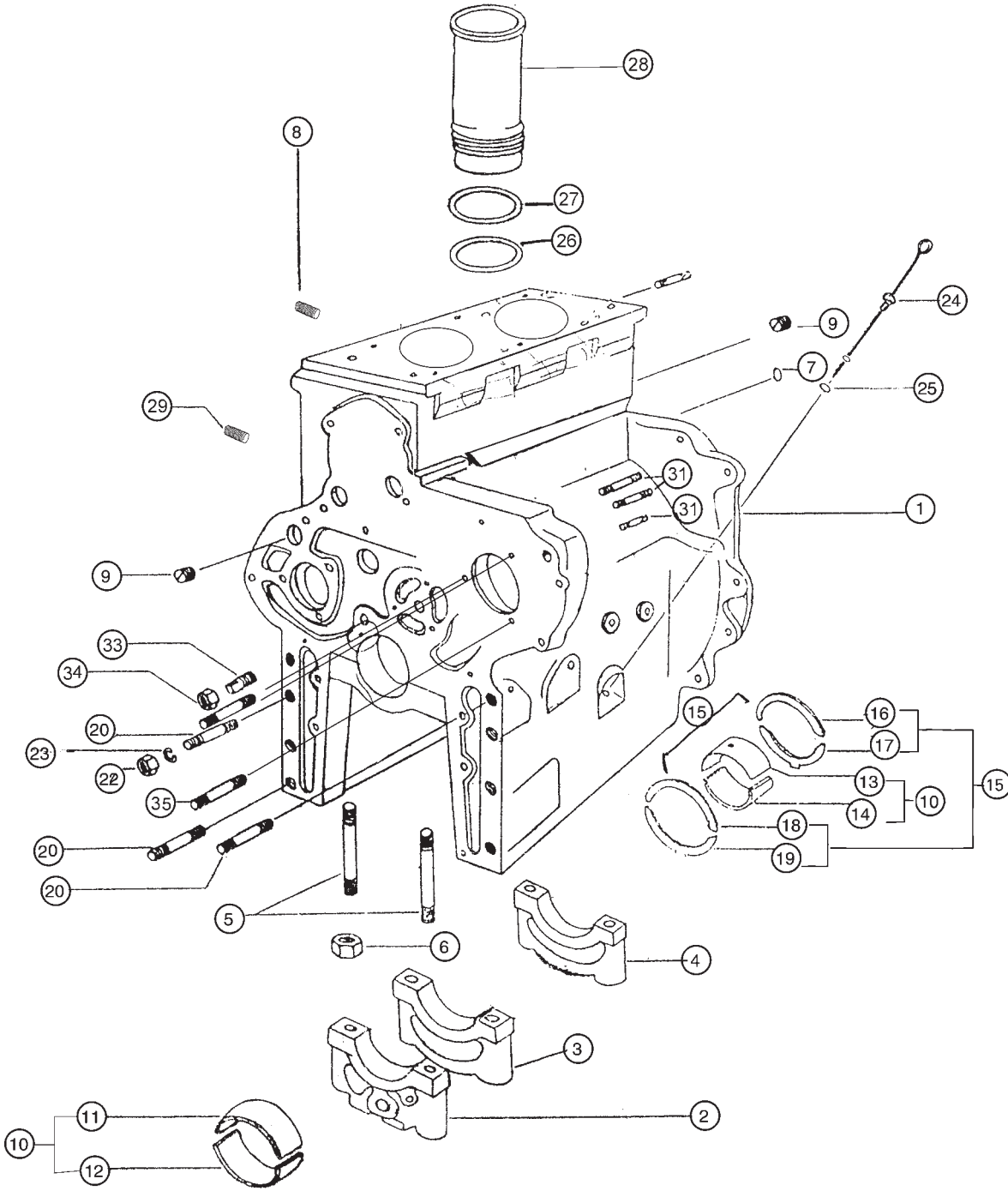
HYDRAULICS



HYDRAULICS

<i>REF. NO.</i>	<i>DESCRIPTION OF PART</i>	<i>UNIT QTY.</i>	<i>NEW / REVISED PART NO.</i>
1	PIPE Pressure Cpte.	1	
2	PIPE Cpte. Suction	1	
3	PINION Hydraulic Pump	1	
4	PUMP Hydraulic	1	

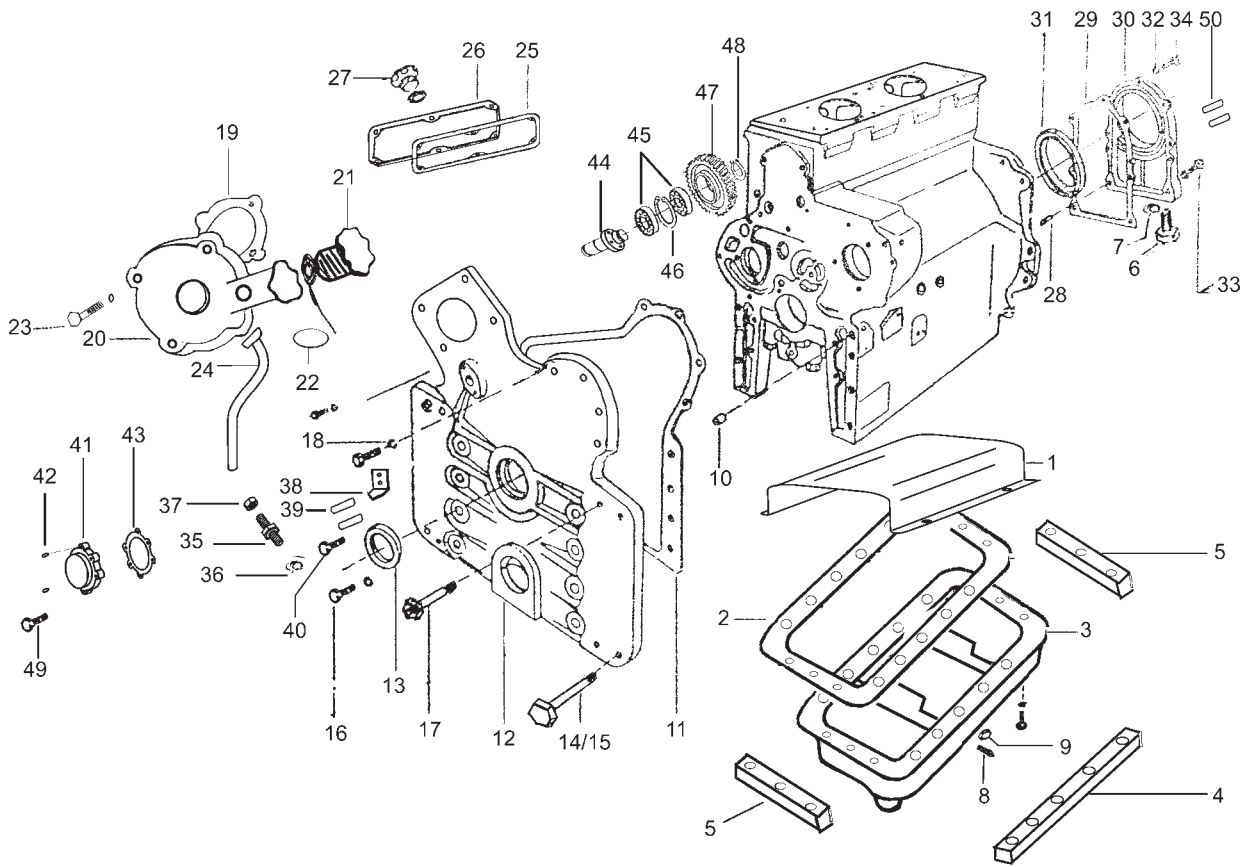
CRANKCASE ASSEMBLY



CRANKCASE ASSEMBLY

REF. NO.	DESCRIPTION OF PART	UNIT QTY.	NEW / REVISED PART NO.
1	CRANKCASE Assy With Bearing Cap	1	
2	↳ CAP Front Bearing	1	
3	↳ CENTRE Bearing Cap	1	
4	↳ CAP Rear Bearing	1	
5	↳ STUD Bearing M14 X 126	6	
6	↳ NUT M14 X 1.5 For Mb Cap	6	
7	PLUG Sheet Metal -welch Plug	1	
8	PLUG For Oil Gallery	3	
9	PLUG With Groove 18 X 1.5 (Front Oil Gallery)	2	
10	SET Of Bearings Comprising Of	1	
11	↳ MAIN BEARING Top Front	2	
12	↳ MAIN BEARING Bottom Front	2	
13	↳ MAIN BEARING Top Rear	1	
14	↳ MAIN BEARING Bottom Rear	1	
15	SET Of Thrust Washer Comprising Of	1	
16	↳ THRUST WASHER Top Outer	1	
17	↳ THRUST WASHER Bottom Outer	1	
18	↳ THRUST WASHER Top Inner	1	
19	↳ THRUST WASHER Bottom Inner	1	
20	STUD For Front Cover M16 X84	8	
22	NUT M16 X2 (Front Cover)	8	
23	WASHER 16.2(front Cover)	8	
24	OIL Dip Stick Assy.	1	
25	SEALING Ring For Dip Stick	1	
26	SEALING Ring - Cylinder Liner (Lower)	2	
27	SEALING Ring - Cylinder Liner (Upper)	2	
28	CYLINDER Liner	2	
29	DRAIN Plug	1	
31	STUD M10 X 25 (Fip)	3	
33	SCREW Lubricating Distribution Mechanism	1	
34	NUT	1	
35	PLUG Crankcase	3	
*	STUD M10 for Starter Motor Mtg.	3	

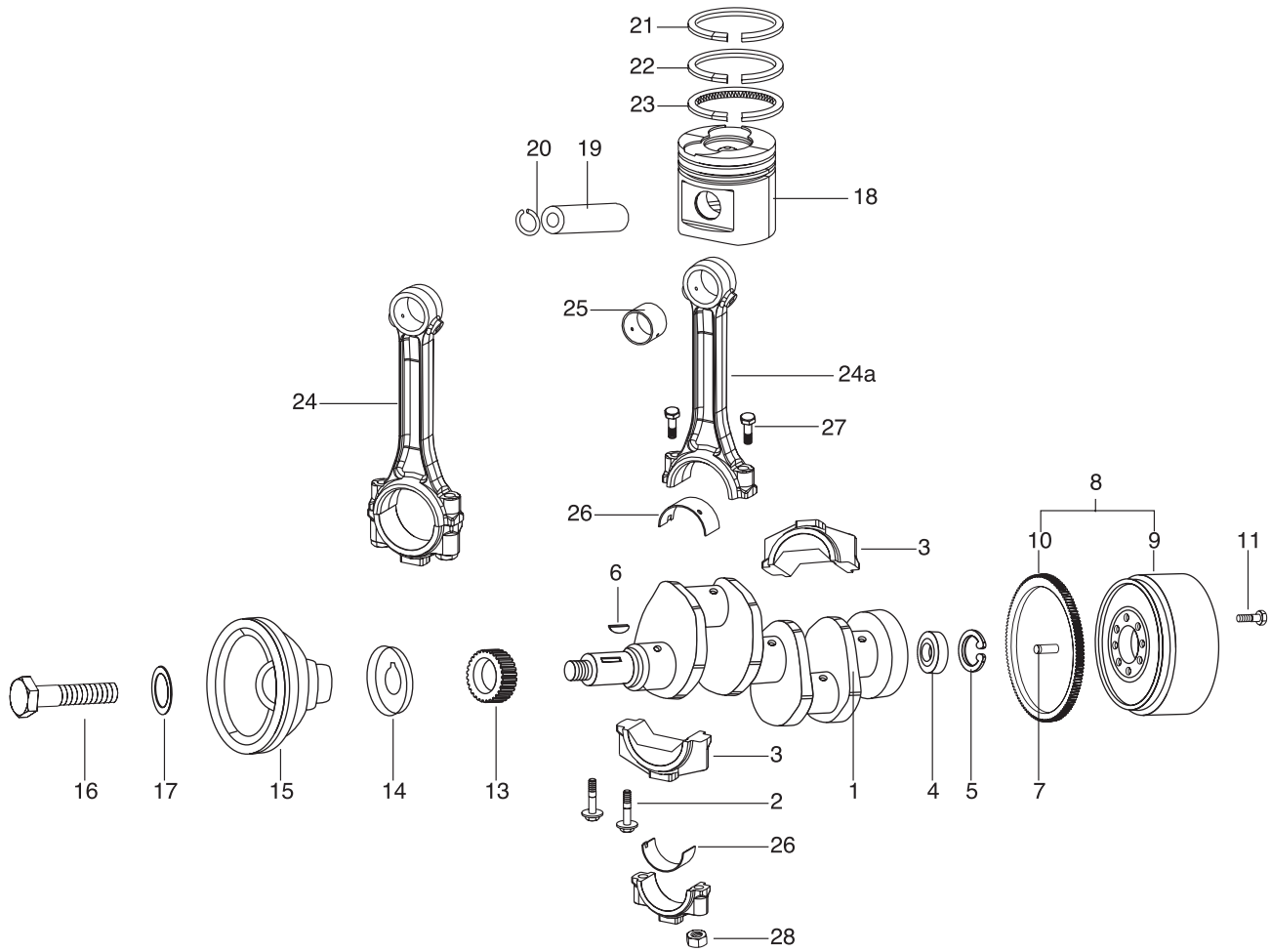
CRANKCASE ASSEMBLY



CRANKCASE ASSEMBLY

REF. NO.	DESCRIPTION OF PART	UNIT QTY.	NEW / REVISED PART NO.
1	SHEET Metal Cover Assy.	1	
2	OIL Pan Gasket	1	
3	OIL Pan Assy(sheet Metal)	1	
4	LATTERAL Batton	2	
5	BATTON	2	
6	BOLT M8x25 For Oil Pan To Rear Cover	20	
7	WASHER Spring M8 For Oil Pan	13	
8	DRAIN Plug M30 X 1.5	1	
9	WASHER For Drain Plug	1	
10	CENTRING Tube - Front Cover(dowel)	2	
11	FRONT Cover Gasket	1	
12	FRONT Cover	1	
13	SHAFT Sealing Ring 52x72x12 (Front Cover)	1	
14	BOLT M10 X 85 Long For Front Cover	2	
15	BOLT M10 X 85 With Sealing Hole	1	
16	BOLT M10x 55 Front Cover	1	
16	BOLT M10x45 For Front Cover	1	
17	BOLT M10 X 60 For Front Cover	1	
18	SPRING Washer 10.2 For Front Cover	7	
19	GASKET Timing Gear Cover(fip Cover)	1	
20	COVER Timing Gear (Fip)	1	
21	FILTER Cap	1	
22	CLIP	1	
23	BOLT M 10 X 25 (Timing Gear Cover Fip)	1	
24	BREATHER Tube	1	
25	SIDE Cover Gasket	1	
26	SIDE Cover(tappet)	1	
27	BOLT For Side Cover	6	
28	PIN M8x6x16 (Dowel Rear Cover)	2	
29	REAR Covergasket	1	
30	REAR Cover	1	
31	OIL Sealing Ring (Crankshaft Seal)	1	
32	SPRING Washer 8.2 For Rear Cover	7	
33	BOLT M8 X 30 For Rear Cover	2	
34	BOLT M8 X 25 Rear Cover)	5	
35	CONNECTOR Hour Meter Cable	1	
36	WASHER For Connector		
37	NUT Transmission Cable	1	
38	TIMING Mark Pointer	1	
39	DOWEL	1	
40	BOLT	2	
41	IDLER Cage	1	
42	DOWEL	2	
43	GASKET Cage Idler	1	
44	IDLER Shaft	1	
45	BEARING 6204 N	2	
46	CIRCLIP Internal	1	
47	GEAR Idler	1	
48	CIRCLIP External	1	
49	BOLT M8 X 1.25 X 30	4	
50	DOWEL Crankcase To Clutch Housing	2	

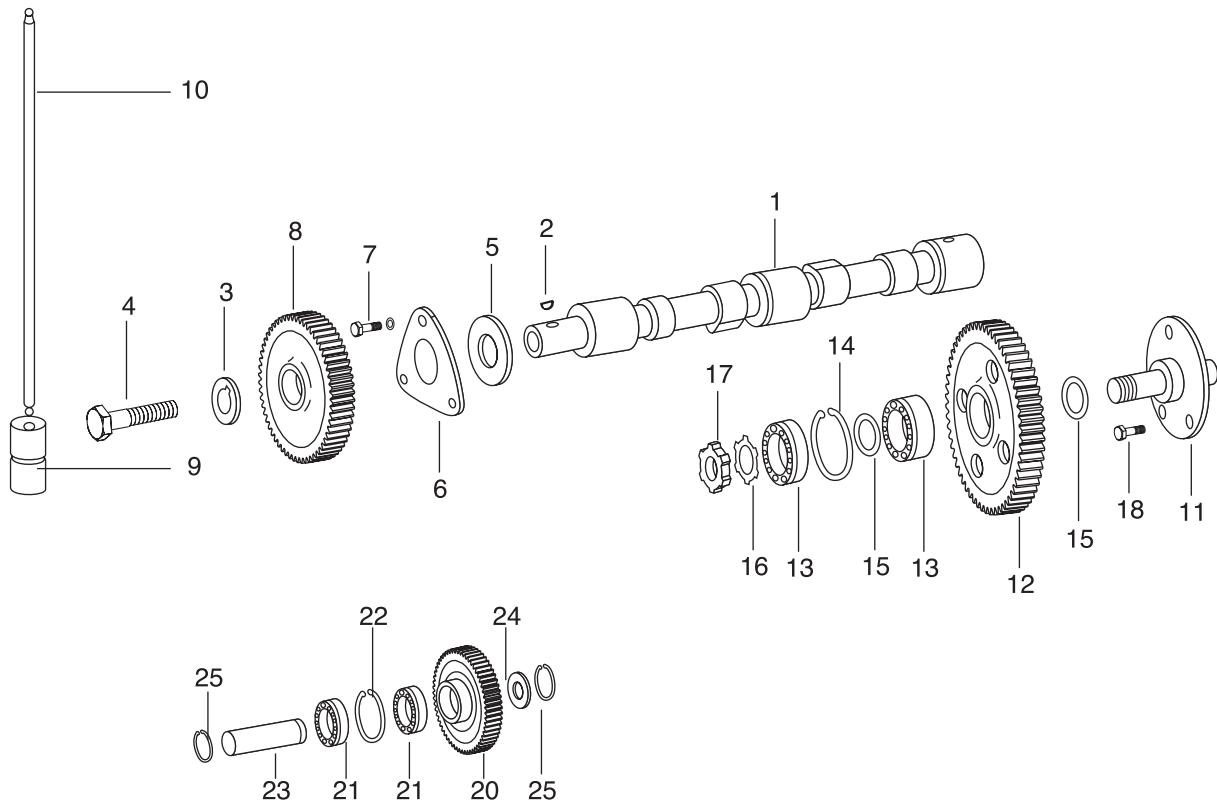
CRANKSHAFT MECHANISM



CRANKSHAFT MECHANISM

REF. NO.	DESCRIPTION OF PART	UNIT QTY.	NEW / REVISED PART NO.
1	CRANKSHAFT Assy.	1	
2	COUNTER Weight Bolt	4	
3	COUNTER Weight	2	
4	BEARING Pilot 6304ZR	1	
5	CIRCLIP 32 (Crank Shaft)	1	
6	KEY 10h 9 X 8 X 55 (CRANKSHAFT)	1	
7	PIN 12 X 28 (Dowel Crankshaft to flywheel)	1	
8	FLYWHEEL Assy.	1	
	Comprising of		
9	↳ FLYWHEEL 11î	1	
10	↳ FLY WHEEL Ring Gear	1	
11	FLY WHEEL bolt	4	
13	CRANKSHAFT Timing Gear	1	
14	FRONT Oil Slinger Ring	1	
15	ENGINE Belt Pulley	1	
16	PULLEY Bolt (Crankshaft)	1	
17	WASHER For Crankshaft	1	
	KIT Piston	1	
	Comprising of		
18	↳ PISTON	2	
19	↳ PISTON PIN	2	
20	↳ CIRCLIP (Piston Pin)	4	
*	RING Set (For 1 Piston)	1	
	Comprising of		
21	↳ RING 1	2	
22	↳ RING 2	2	
23	↳ RING 3	2	
24	CONNECTING Rod Assembly	2	
	Comprising of		
24a	↳ CONROD	2	
25	↳ CONROD Small End Bush	2	
27	↳ CONNECTING Rod Bolt	4	
28	↳ CONNECTING Rod Bolt Nut	4	
26	CONROD Big End Liner	4	

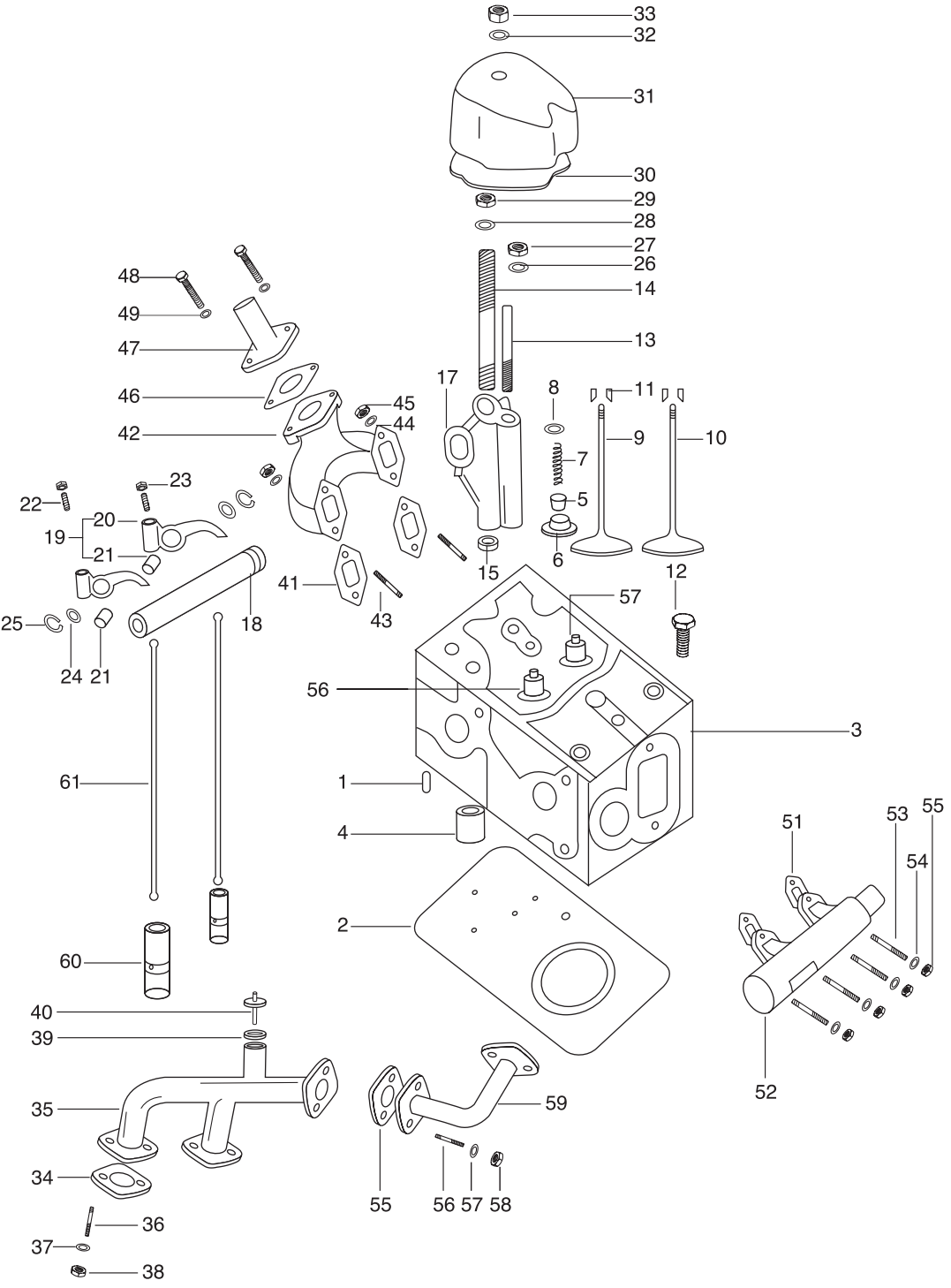
VALVE GEAR



VALVE GEAR

<i>REF. NO.</i>	<i>DESCRIPTION OF PART</i>	<i>UNIT QTY.</i>	<i>NEW / REVISED PART NO.</i>
1	CAMSHAFT	1	
2	WOODRUF Key	1	
3	CAM Shaft Washer	1	
4	CAM Shaft Bolt	1	
5	CAM Shaft Pad	1	
6	CAMSHAFT Adaptor	1	
7	BOLT M 8x16 L For Camshaft Pad	3	
8	TIMING Gear Camshaft	1	
9	VALVE Tappet Assy.	4	
10	PUSH Rod Assy.	4	
11	INTERMEDIATE Gear Pin	1	
12	TOP Intermediate Gear (Idler Gear)	1	
13	BEARING 6204	2	
14	CIRCLIP 47 csn 022931	1	
15	WASHER Special for Intermediate Gear	1	
19	TIMING Gear - FIP	1	
18	BOLT M8X16 for timing gear - FIP	6	
16	LOCK PAD (star washser)	1	
17	NUT For Top Inter. Gear (Idler)	1	
20	BOTTOM Intermediate Gear	1	
21	BEARING 6203	2	
22	CIRCLIP 40 (Bottom Intermdiate Gear Pin)	1	
23	INTERMEIATE Gear Pin Bottom	1	
24	INTERMEIATE Gear Pad Bottom	1	
25	CIRCLIP 17 (Bottom Intermdiate Gear Pin)	2	

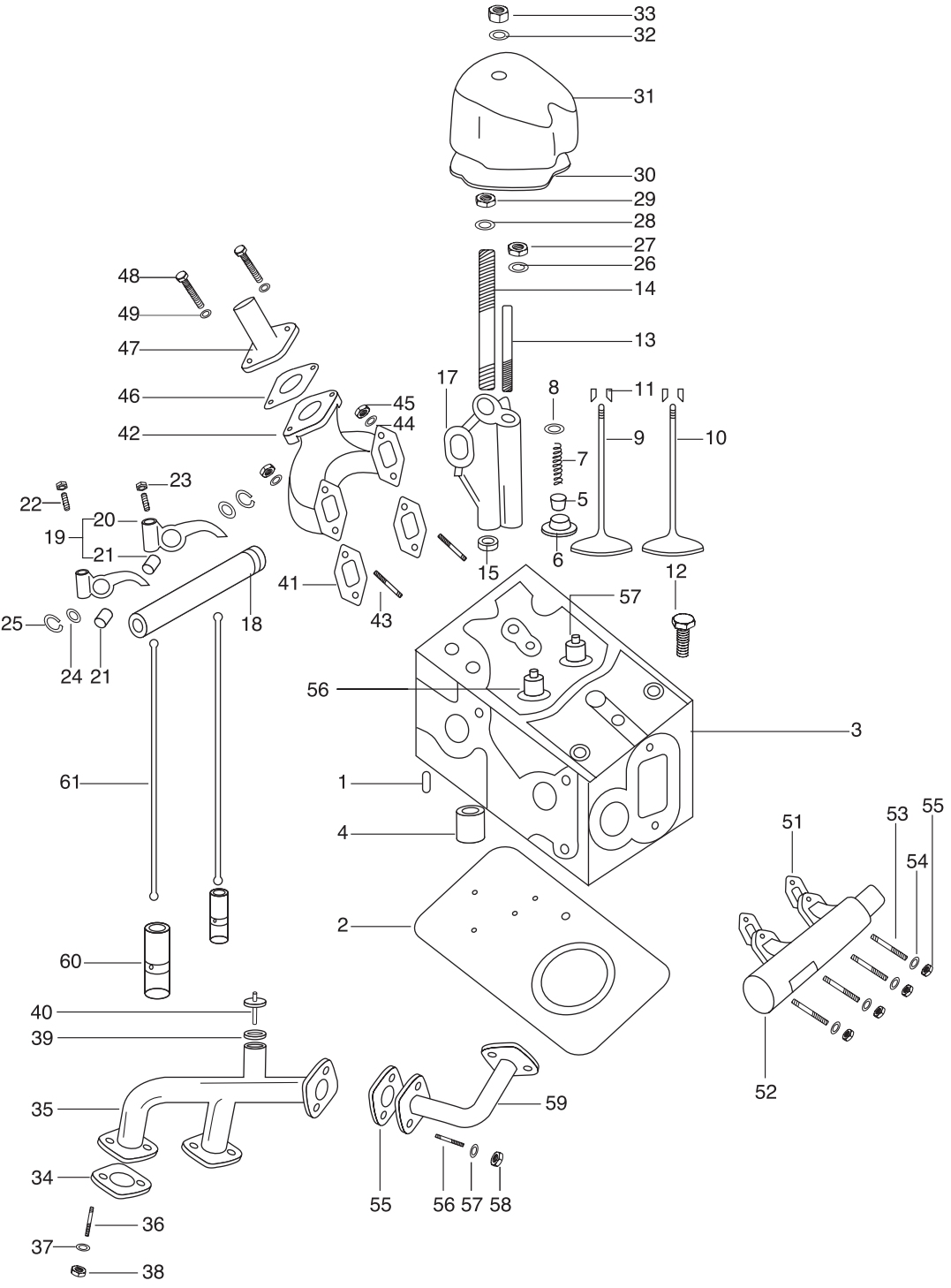
CYLINDER HEAD ASSEMBLY



CYLINDER HEAD ASSEMBLY

REF. NO.	DESCRIPTION OF PART	UNIT QTY.	NEW / REVISED PART NO.
1	CYL. DOWEL	4	
2	CYLINDER head gasket	2	
3	ASSY CYLINDER Head with Weltch Plugs	2	
3	CYLINDER Head	1	
	▶ PLUG Expansion 30 X 2.0 X 42	6	
	▶ PLUG Expansion 56 X 2.0 X 80	1	
	▶ PLUG Expansion Dia 40	1	
	▶ VALVE guide Exhaust prefinish	1	
	▶ VALVE guide Inlet - prefinish	1	
	▶ INLET valve seat Insert- Prefinish	1	
	▶ EXHAUST Valve seat Insert- Prefinish	1	
4	WATER Director	2	
5	VALVE STEM seal	4	
6	SPRING retainer cup lower	4	
7	VALVE spring	4	
8	RETAINER Spring Upper	4	
9	INLET valve	2	
10	EXHAUST Valve	2	
11	SCORED cone collet	8	
12	CYLINDER HEAD BOLTS	8	
13	STUD ROCKER ARM BRACKET	2	
14	STUD M10 X1.5 ROCKER COVER	2	
15	LOCATION Sleeve for Rocker Bracket (Pin7X14)	2	
16	ASSEMBLY Rocker Group	2	
17	▶ ROCKER Arm Bracket	1	
18	▶ ROCKER Shaft	1	
19	▶ ROCKER Arm Assembly	2	
20	▶ ROCKER Arm	1	
21	▶ ROCKER Arm Bush	1	
22	▶ ADJUSTING Screw	2	
23	▶ ADJUSTING Screw Nut	2	
24	▶ ROCKER shaft washer	2	
25	▶ CIRCLIP 19 (rocker shaft)	2	
26	SPRING Washer(m8) For Rocker Assy Mtg Stud	2	
27	NUT (m8) For Rocker Bkt Stud	2	
28	SPRING Washer(m10) For Rocker Assy Mtg Stud	2	
29	NUT (M10) for Rocker Bkt Stud	2	
30	VALVE Cover gasket	2	
31	COVER CYL HD (valve hsg. cover)	2	
32	PLAIN WASHER VALVE HSG. COVER	1	
33	CAP NUT VALVE HOUSING COVER	2	
34	GASKET WATER Manifold	2	
35	OUTLET water manifold	1	
36	STUD M8 - WATER MANIFOLD	4	
37	WASHER 8.2	4	
38	NUT M8 X 1.25	4	
39	WASHER For Temperature Sensor Adaptor	1	

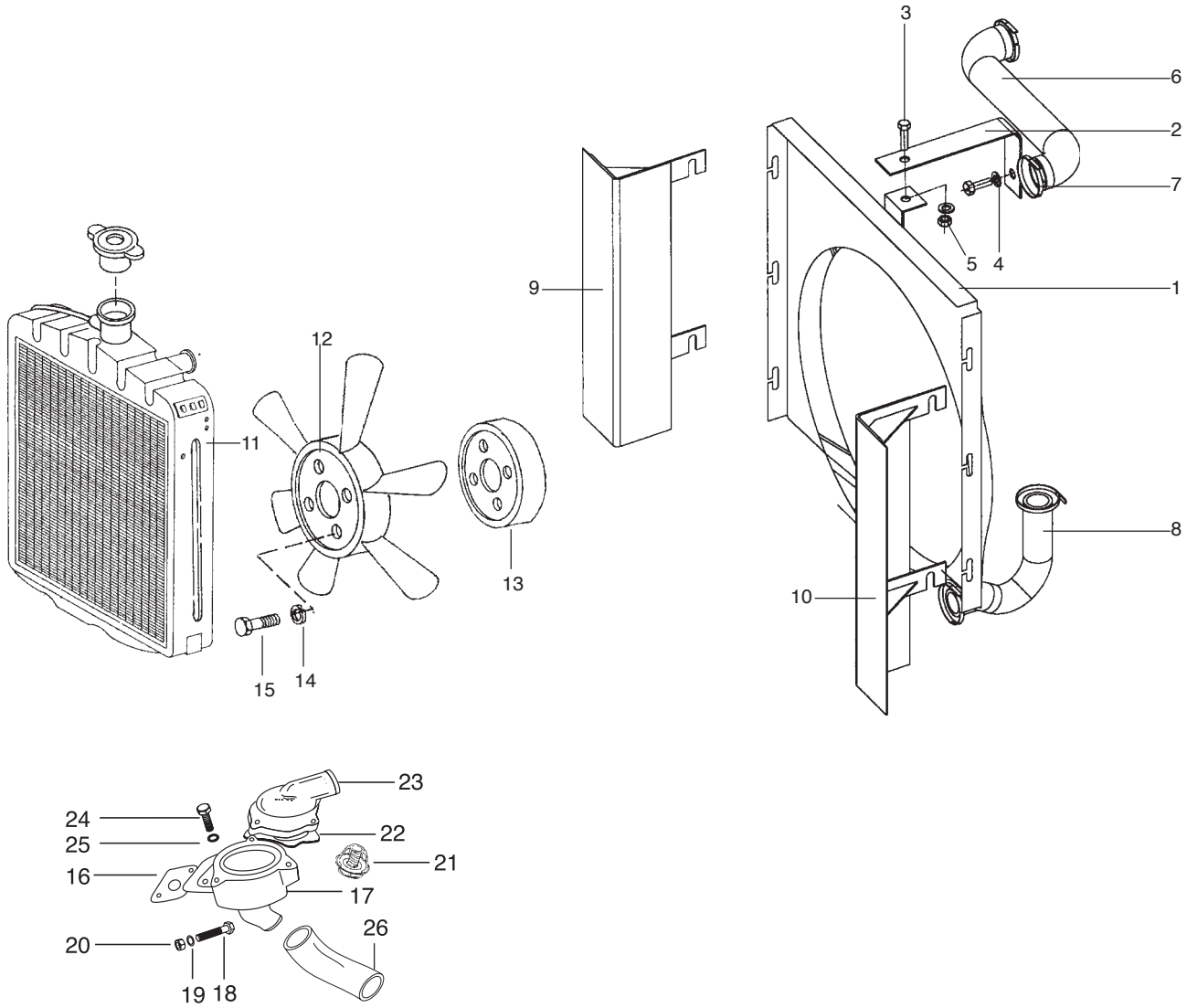
CYLINDER HEAD ASSEMBLY



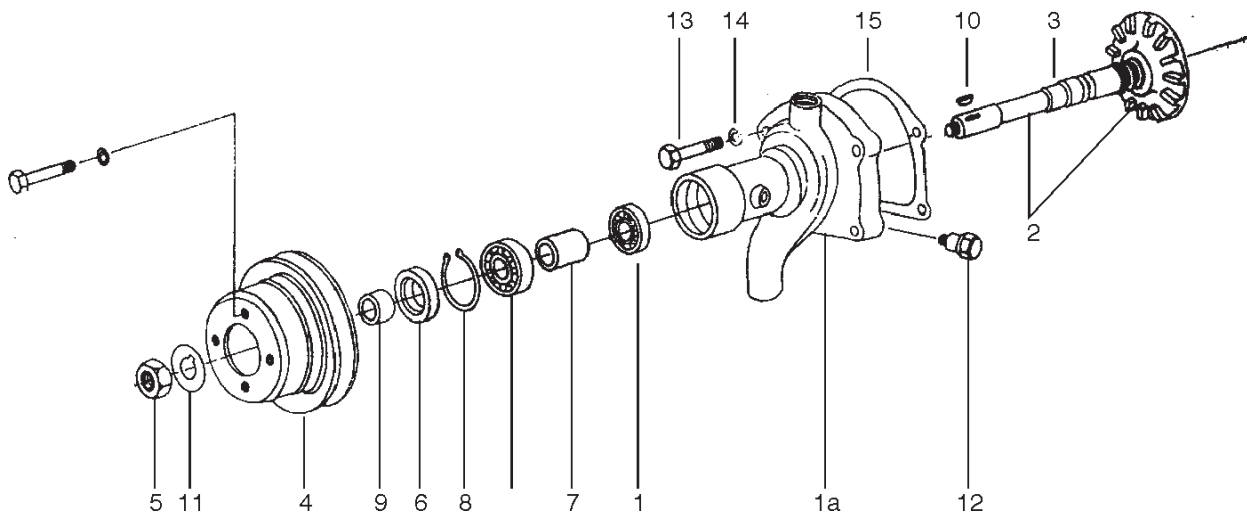
CYLINDER HEAD ASSEMBLY

<i>REF. NO.</i>	<i>DESCRIPTION OF PART</i>	<i>UNIT QTY.</i>	<i>NEW / REVISED PART NO.</i>
40	TEMP Sensor Adapter	1	
41	GASKET Between Exhaust manifold And Cyl. Head	2	
*	EXHAUST Manifold Assembly	1	
	Comprising of		
42	→ EXHAUST Manifold	1	
46	→ GASKET STUB PIPE	1	
47	→ STUB PIPE ASSY	1	
48	→ BOLT - EXHAUST MANIFOD AND STUB PIPE	2	
49	→ WASHER	2	
43	STUD M10 - EXHAUST MANIFOLD	4	
44	WASHER 10.2	4	
45	NUT M 10	4	
50	GASKET BETWEEN INTAKE MANI AND CYL HEAD	2	
51	INTAKE MANIFOLD	1	
52	STUD M8 INLET MANIFOLD	4	
53	SPRING WASHER 8.2	4	
54	NUT M8 X 1.25	4	
55	GASKET	1	
56	STUD	2	
57	WASHER	2	
58	NUT	2	
59	INTERMEDIATE Manifold	1	
60	VALVE Tappet Assy.	4	
61	PUSH Rod Assy.	4	

COOLING SYSTEM



WATER PUMP ASSEMBLY



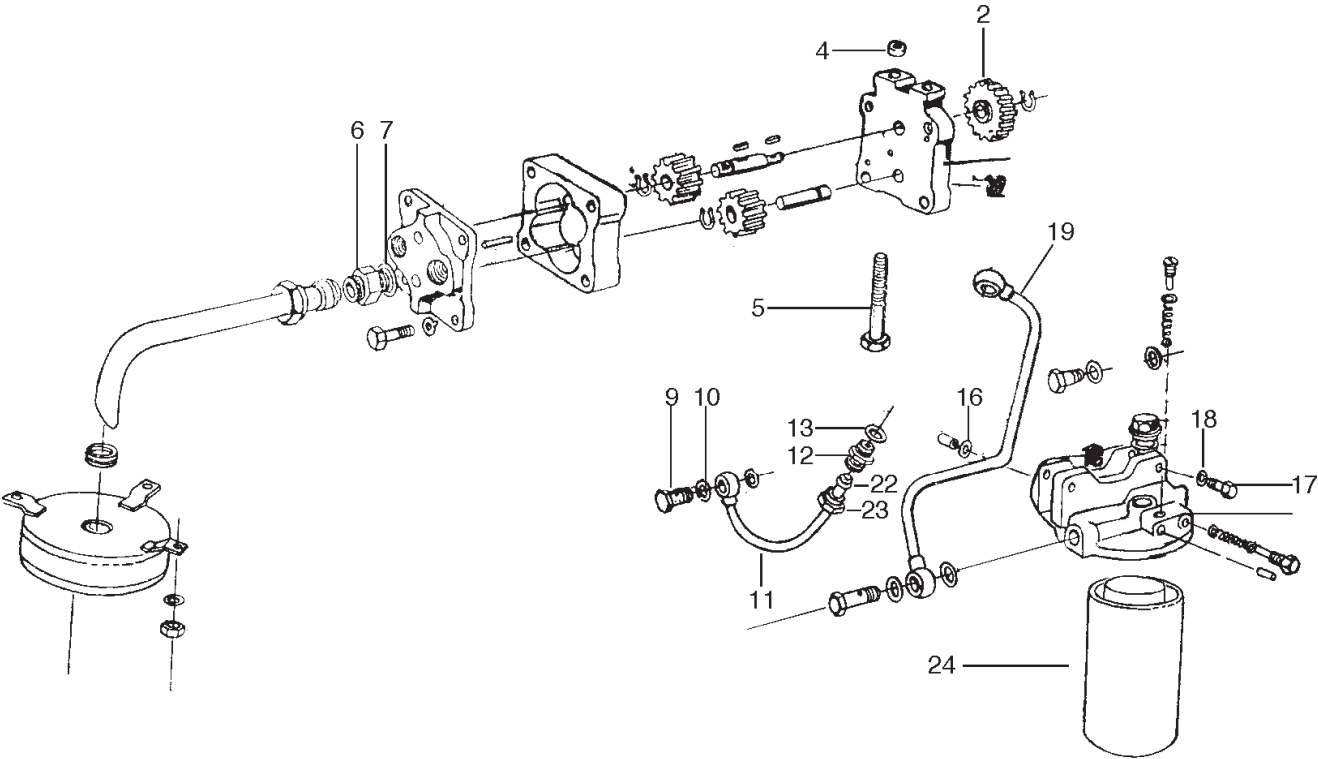
COOLING SYSTEM

REF. NO.	DESCRIPTION OF PART	UNIT QTY.	NEW / REVISED PART NO.
1	RADIATOR Cowl Cpte	1	
2	BRACE Radiator	1	
3	BOLT M10 x 1.5 20mm	2	
4	WASHER Spring Lock M10	2	
5	NUT M10 x 1.5 Pitch	2	
6	HOSE Radiator To Thermostat	1	
7	HOSE Clip	6	
8	HOSE Radiator To Water Pump	1	
9	RADIATOR Side Sealing RH	1	
10	RADIATOR Side Sealing LH	1	
11	RADIATOR Assembly	1	
12	FAN Blade Assembly	1	
13	FAN Spacer	1	
14	WASHER Spring Lock M8	4	
15	FAN MTG Bolt (M8 x 50) Hex Head	4	
16	GASKET Thermostat Hsg. & Water Outlet Manifold	1	
17	THERMOSTAT HSG	1	
18	STUD M8 - THERMO. HSG. COVER & WATER MANIFOLD	2	
19	WASHER 8.2 FOR STUD8	2	
20	NUT M 8	2	
21	THERMOSTAT	1	
22	GASKET betn Thermostat Hsg & cover	1	
23	COVER THERMOSTAT HSG.	1	
24	BOLT	3	
25	WASHER SPRING LOCK M6	3	
26	HOSE Thermostat Housing to Water Pump	1	

WATER PUMP ASSEMBLY

1a	WATER PUMP ASSY	1	
1	SEAL Unitized	1	
2	IMPELLER	1	
3	SHAFT Water Pump	1	
4	PULLEY	1	
5	NUT Nyloc	1	
6	OIL Seal	1	
7	SPACER Tube	1	
8	CIRCLIP Internal	1	
9	SPACER	1	
10	KEY Woodruff	1	
11	WASHER for Locknut	1	
12	GREASE Cup Assy.	1	
13	BOLT M10 X 1.5 X 35 (10.9 GR)	4	
14	WASHER 10.2	4	
15	WATER PUMP GASKET	1	

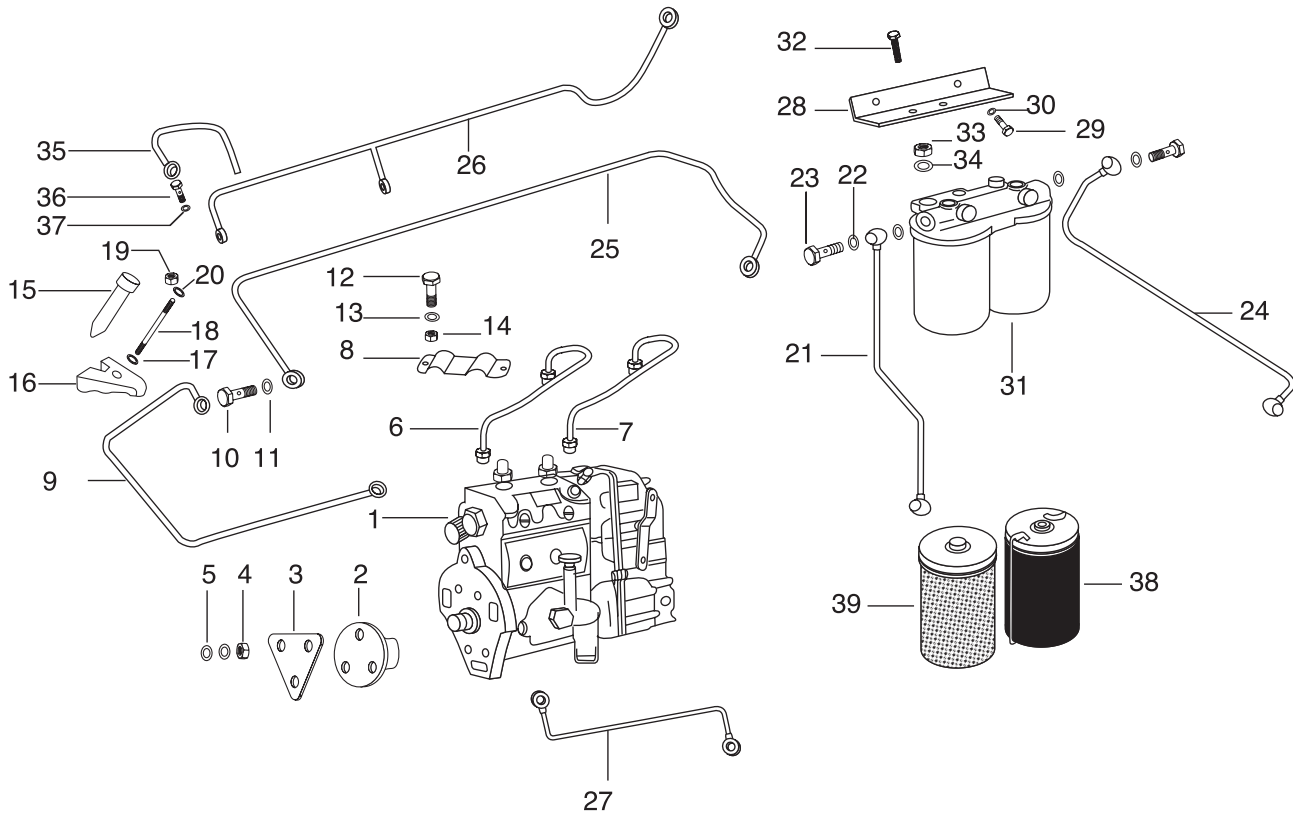
LUBRICATING SYSTEM



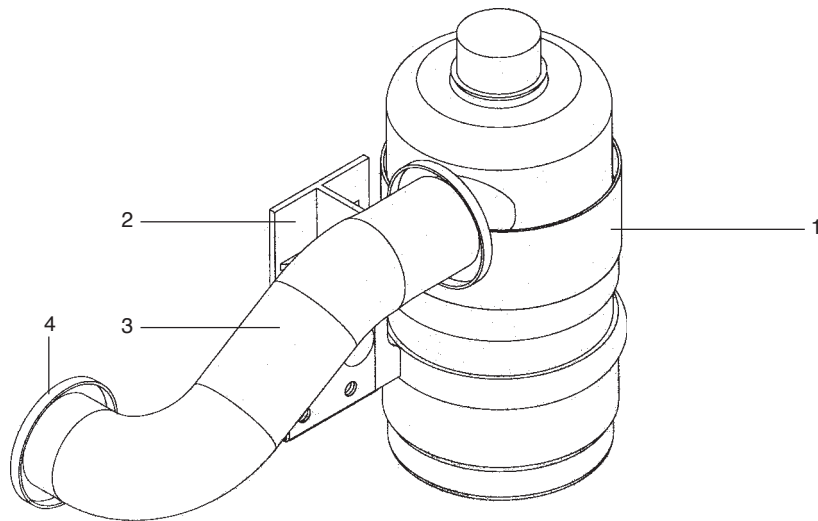
LUBRICATING SYSTEM

<i>REF. NO.</i>	<i>DESCRIPTION OF PART</i>	<i>UNIT QTY.</i>	<i>NEW / REVISED PART NO.</i>
1	OIL Pump Assembly	1	
2	OIL Pump Drive Gear	1	
4	OIL Pump Centering Tube	2	
5	BOLT M10 X 130 L For Oil Pump Mounting	2	
6	SCREW Connector (Connector Oil Pump Inlet)	1	
7	COPPER Washer 26 X 31 For Screw Connector	1	
8	SUCTION Strainer Assy	1	
9	BANJO Bolt 13 For Lub Oil Pump	1	
10	COPPER Washer 18.2x23	2	
11	DELIVERY Pipe Assy	1	
12	CONNECTOR - Hp Pipe To Block	1	
13	COPPER Washer 18.2x23	1	
14	SINGLE Stage Oil Filter Assy. Comprising Of	1	
15	↳ BRACKET Oil Filter	1	
16	↳ SEALING Ring	2	
24	↳ FILTER Element	1	
17	BOLT M10x25 For Mounting Oil Filter Assy	2	
18	WASHER Spring 10.2 For Mounting Oil Filter Assy	2	
19	DELIVERY Pipe Lub Oil Pump To Block	1	
20	BANJO Bolt 13 For Delivery Pipe Pump To Block	2	
21	COPPER Washer 18.2 X 23	4	
22	SEALING Taper	1	
23	FERRULE	1	

FUEL SYSTEM



AIR CLEANER



FUEL SYSTEM

REF. NO.	DESCRIPTION OF PART	UNIT QTY.	NEW / REVISED PART NO.
1	INJECTION Pump (Mico)	1	
2	ADAPTER (Fip)	1	
3	GASKET For Injection Pump	1	
4	NUT M10 For Pump Mounting	3	
5	SPRING Washer 10	3	
6	FUEL Injection Pipe (High Press Pipe No. 1)	1	
7	FUEL Injection Pipe (High Press Pipe No. 2)	1	
8	CLIP For Holding High Pressure Pipe (Holder High Pressure Pipe)	1	
9	PIPE - FIP Lubrication	1	
10	BANJO M10	2	
11	WASHER Copper	4	
12	BOLT For Clip-high Pressure Pipe	1	
13	SPRING Washer M6	2	
14	NUT For Bolt For Clip - High Pressure Pipe	1	
15	INJECTOR Assembly	2	
16	CLAMP Nozzle Holder	2	
17	WASHER Spherical Inj Nozzle Holder	2	
18	STUD Nozzle Holder	2	
19	NUT M8 For Injector Clamplng	2	
20	WASHER 8.2	2	
21	PIPE Cpte. From Filter To Fip	1	
22	WASHER Copper - Pipe Cpte From Filter To Fip (Sealing Ring)	4	
23	BANJO Bolt M14x1.5 - Pipe Cpte From Filter To Fip	2	
24	PIPE From Feed Pump To Fuel Filter	1	
25	OVERFLOW Pipe From Fip To Tank	1	
26	PIPE Cpte Fuel Spill Injector To Tank	1	
27	PIPE Cpte Water Seperator To Feed Pump	1	
28	BRACKET For Diesel Filter	1	
29	BOLT M10 X 20 Filter Angle Plate Mounting	2	
30	WASHER Spring M 10 - For Fuel Filter Bracket	2	
31	FUEL Filter Twin 1/2 Lit. Mico	1	
32	BOLT M10 X 30 For Mounting Filter Assy.	2	
33	NUT For Mounting Filter Assyl.	2	
34	WASHER Spring Lock M12 For Mtg. Fuel Filter On Filt. Bracket	2	
35	PIPE - Oil Gallery To Front Cover	1	
36	BANJO M10	2	
37	WASHER Copper	4	
38	FILTER Element Primary	1	
39	FILTER Element Secondary	1	

AIR CLEANER

1	AIR Cleaner	1	
2	BRACKET Air Clean	1	
3	HOSE Air Intake Oil	1	
4	CLIP Hose Air Cleaner End	2	